

## SignBlazer 6.05

Successfully installed and tested on XP, using a USCutter Refine MH 721 plotter and CorelDraw X4.

1. If you have a version of SignBlazer installed, uninstall and then delete the folder

C:\Program Files\Cutting Technologies

2. Download the [SignBlazer Elements version 6.05](#) zip file here and extract.
3. Install SB-6-setup.exe (deselect options for shortcuts. After install, don't launch it yet)
4. Install SBE-update.exe (Select option for shortcut on desktop. After install, don't launch it yet)
5. Install SBE-patch.exe
6. Now click on shortcut on desktop. You will now have version 6.05.

### Tips

- 1) For updates, check out the following forum page

<http://forum.uscutter.com/index.php?/topic/32178-signblazer-elements-605-cracked-and-tested/>

- 2) if you have a USCutter Refine MH series, use the following settings

**Cutter Setup**

Cutter: RedSail RS720C

Output Device: Blazer.COM1: - Communications Port

Direct  Use Cut Manager

Vinyl size - Width: 24.00 Length: 120.00

Tile Overlap: 0.00 Speed: 33.43 Inch/Sec

Advance Page After Job  X axis override  Blade Offset (MM) 0.01

Gap between jobs 0.25

Cut Holes First  Trim Tiles

Pre-Feed Vinyl  Cut dimensions

Sort before cutting

Limit to workspace

Cut Direction:  Normal  Clockwise  Counter Clockwise

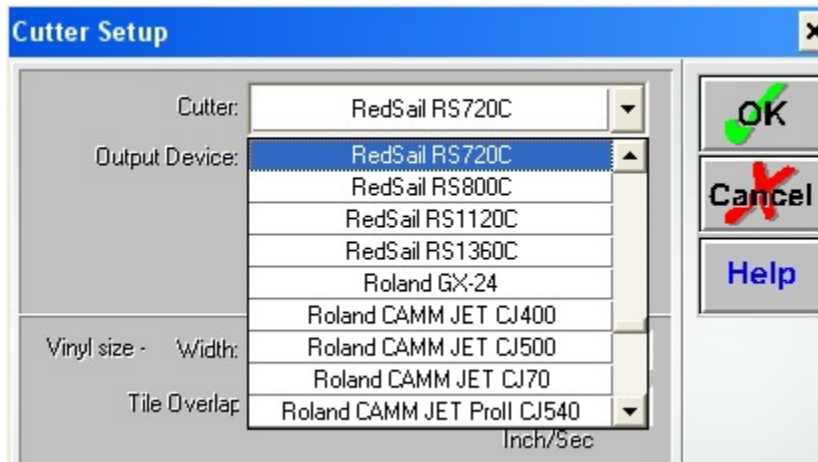
Cutter Movement:  Normal  Best tracking (Minimize vinyl movement)  Fastest path (Minimize cutter movement)

Cutter Setup:

OK Cancel Help

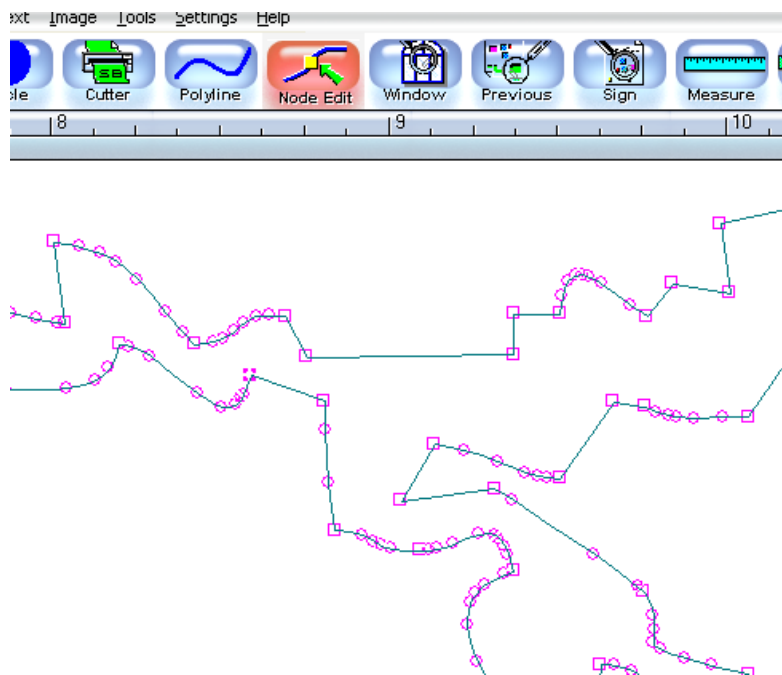
Choose the driver that matches your Plotter. [RedSail](#) plotters are the same as US Cutter plotters.

For example, for MH 1351 plotters, use RS1360C driver. Test it out by creating several 1in x 1in blocks and array them along the width of the plotter. Do a test cut with this and check with a ruler or tape measure that the cuts are accurate.



2) If you copy/paste curves from CorelDraw, you will end up with an outline in SignBlazer. If you cut this it will appear to cut the same thing twice. To fix this, clear all outlines on fills and then copy/ paste the fill only.

3) If you want to just cut a line, you have to use Node Edit and delete nodes or use Signcut Pro. Signcut is very good in this respect. This is the only thing that I will use Signcut Pro for.



4) Zoom scroll is backwards. Don't know of a fix. If you do, suggest one in the forum link above.

